

Name \_\_\_\_\_ Date \_\_\_\_\_ Period \_\_\_\_\_

### **Bones Lab**

Directions:

- 1) Get a big piece of poster paper and outline someone in your group in pencil.
- 2) Draw a human skeleton inside the outline of your lab partner in black marker. Use the skeleton on the back to help you!
- 3) Label the 20 main bones in the body.
- 4) Classify all the joints and label them.

Duties: - 2 (or more) people draw bones

1 Person label the bones

1 Person label the joints

- Red for Hinge Joint
- Blue for Ball-and-Socket Joint
- Green for Pivot Joint
- Purple for Gliding Joint

Name \_\_\_\_\_ Date \_\_\_\_\_ Period \_\_\_\_\_

### **Bones Lab**

Directions:

- 1) Get a big piece of poster paper and outline someone in your group in pencil.
- 2) Draw a human skeleton inside the outline of your lab partner in black marker. Use the skeleton on the back to help you!
- 3) Label the 20 main bones in the body.
- 4) Classify all the joints and label them.

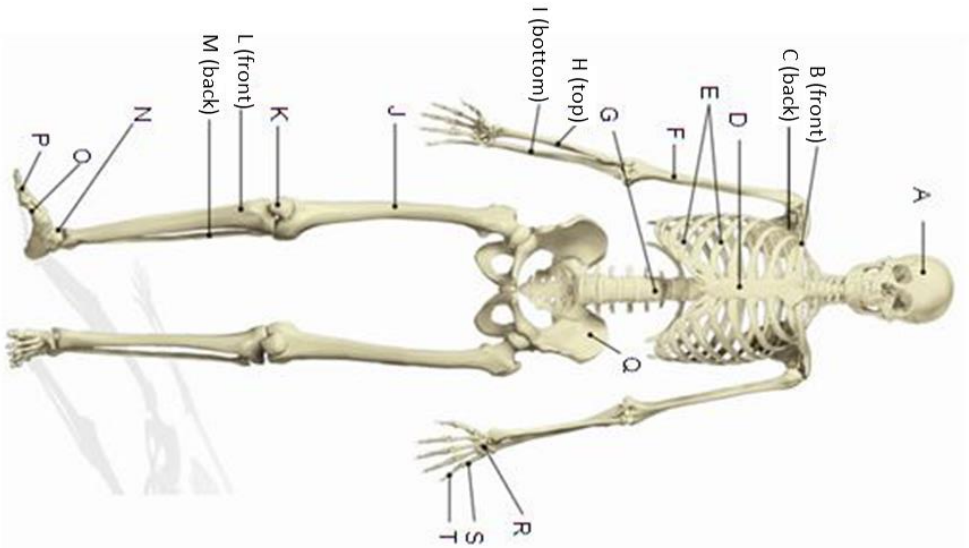
Duties: - 2 (or more) people draw bones

1 Person label the bones

1 Person label the joints

- Red for Hinge Joint
- Blue for Ball-and-Socket Joint
- Green for Pivot Joint
- Purple for Gliding Joint

A	Skull
B	Clavicle
C	Scapula
D	Sternum
E	Ribs
F	Humerus
G	Vertebral Column
H	Radius
I	Ulna
J	Femur
K	Patella
L	Tibia
M	Fibula
N	Tarsals
O	Metatarsals
P	Phalanges
Q	Pelvic girdle
R	Carpals
S	Metacarpals
T	Plalanges



A	Skull
B	Clavicle
C	Scapula
D	Sternum
E	Ribs
F	Humerus
G	Vertebral Column
H	Radius
I	Ulna
J	Femur
K	Patella
L	Tibia
M	Fibula
N	Tarsals
O	Metatarsals
P	Phalanges
Q	Pelvic girdle
R	Carpals
S	Metacarpals
T	Plalanges

